



The Newsletter of  
the Texas Chapter of  
the American Fisheries Society



Volume 21 (3)

Meeting Issue

August 1995

## COLLEGE STATION 1995

by Mark Webb

Welcome to College Station and the 1995 Annual Meeting of the Texas Chapter AFS. As this year marks the 125th anniversary of the Parent Society, so it marks the 20th anniversary of our State Chapter. Our chapter has grown rapidly in the past few years, leading us to our current membership of nearly 300 fisheries professionals making us the largest chapter in the Southern Division. As our membership has expanded so has the diversity of our members and it is that diversity that we want to emphasize at this year's meeting. To that end you will find within this edition of the newsletter descriptions of activities new to this year's meeting including a professional development session designed specifically for students but open to anyone who wishes to attend, a special issues session to better inform the membership of issues that cut across all aspects of fisheries in Texas, and a continuing education course that highlights the Geographic Information System (GIS) and the Global Positioning System (GPS) technology that is becoming increasingly important to our profession.

Changes have also been made in some of the business aspects of our chapter. As of last year our dues are now payable on the calendar year (beginning each January 1); therefore, our membership fee is no longer required at the meeting (but you can continue to pay ahead if you like). For the first time we are charging a registration fee. The fee will allow us to offset some of our meeting costs so that the money generously provided by our members and special sponsors through our fund raisers can be used to better finance chapter projects. Also we are allowing pre-registration this year to help us better plan our meeting. Included in the \$15.00 pre-registration packet is the registration fee, a ticket to the fish fry and canepole fishing tournament, a raffle ticket for a special drawing open only to those who pre-register, and, for the first

150 who pre-register, a soft side briefcase. With the exception of the special raffle ticket, all the other items will be available "a-la-carte" at the meeting. (The registration fee and meal ticket are being provided free for students by the Texas Chapter AFS and the Texas A&M Chapter AFS respectively. For more meeting details please see the student's section in this newsletter.)

Besides the changes to the meeting, the chapter is undergoing other changes as well. While our direction hasn't changed, the speed at which we're moving continues to increase. As you'll see throughout this newsletter, our chapter is becoming more pro-active, gathering information on issues that concern us and using our resources to increase our impact on fisheries education and other conservation projects. I feel our 20th meeting will be one of our best. We're trying new things, and as a chapter we'll continue to grow both in numbers and in service to our members and our profession. Again on behalf of the EXCOM and the Texas A&M Chapter AFS, welcome to College Station.

## FINAL CALL for PAPERS ANNUAL MEETING of the TCAFS

The **deadline** for submissions to this year's technical program has been **extended to August 25, 1995** with submissions still needed from all areas of the Texas fisheries community. Presenters have the option of having their manuscripts published in the peer reviewed Proceedings of the Texas Chapter AFS or submitting an abstract only. Abstracts for all submissions should be one page single spaced and should be sent to:

**Bob Edwards**  
**Editorial Committee Chair**  
**University of Texas-Pan American**  
**Edinburg, TX 78539**  
**Tel: (210) 381-3537**  
**Fax: (210) 381-3657**



# EARLY BIRD PRE-REGISTRATION DRAWING

## REGISTER EARLY & SAVE \$\$\$

Texas Chapter of the American Fisheries Society  
 1995 - Annual Meeting  
 Hilton Hotel, College Station - September 10 - 12, 1995

### REGISTRATION APPLICATION

Mail completed to:

1995 TCAFS  
 c/o Texas Parks & Wildlife Department  
 HC 07 Box 62  
 Ingram, Texas 78025  
 Phone: (210)866-3356

Mail completed form and payment (Checks or Money Orders Only) by September 1, 1995, to qualify for Pre-Registration.

(Please Print)

Name: \_\_\_\_\_

Affiliation: \_\_\_\_\_

Address: \_\_\_\_\_

Work Phone: \_\_\_\_\_ Home Phone: \_\_\_\_\_ Fax: \_\_\_\_\_

Spouse/Guest Name:(If Attending) \_\_\_\_\_

Regular Pre-registration Package includes registration, fish fry, cane pole tournament, portfolio & early bird raffle ticket	\$15.00	
Spouse/Guest Pre-registration Package includesn, fish fry, cane pole tournament & early bird raffle ticket	\$7.00	
*Student Pre-registration Package **includes registration, cane pole tournament, portfolio & early bird raffle ticket compliments of TCAFS, fish fry compliments of TAMUCAFS	\$15.00	**PAID
Registration	\$7.00	
Monday Fish Fry	\$9.00	
Monday Cane Pole Tournament	\$2.00	
Soft-sided Portfolio	\$7.00	
Tuesday GPS Workshop (Please indicate if you plan to attend)	FREE	
1996 Membership      Regular	\$8.00	
Student *undergratuate ≥12 hours; graduate, ≥9 hours	\$5.00	

**TOTAL**

Only paid pre-registrants will be eligible for a special EARLY BIRD raffle drawing - tickets to a Texas Rangers home game (weekend of your choice for 1995 season)

---

## PRESIDENT'S MESSAGE

by Pat Hutson

I would like to take this opportunity to thank everyone for making this a very successful year for the Chapter and me. The team work was outstanding and all committees did a great job in accomplishing our goals. This year's annual meeting is just around the corner and I am looking forward to another outstanding meeting. Mark has done an exceptional job in putting together what is expected to be a meeting to remember. We have put a great deal of emphasis on student involvement and this year's meeting should accomplish this. We will have our first educational course which will be accredited by TPWD for technician training. More money is available for scholarships. We will be voting on amendments to the Chapter bylaws which should update our needs to improve the Chapter. THANKS EVERYONE! Good luck to Mark. He has many excellent ideas and will take the Chapter to a higher level.

### TENTATIVE SCHEDULE for 1995 TCAFS MEETING

#### Sunday, September 10

##### Professional Development Session

- 1:00-3:00 Career Development Presentations
- 3:00-3:20 Break
- 3:20-5:30 Career Fair
- 6:00-9:00 Student/Professional Mixer  
(Registration 1:00-7:30)

#### Monday, September 11

- 8:00 - 9:40 Technical Session
- 9:40 - 12:00 Issues Presentations
- 12:00 - 1:00 Lunch
- 1:00 - 5:00 Business Meeting
- 5:30 - ? Canepole Fishing Tournament, Fish Fry,  
Raffle/Auction  
(Registration 7:30 - 5:00)

#### Tuesday, September 12

- 8:00 - 10:00 Technical Session
- 10:00 - 10:20 Break
- 10:20-12:00 Technical Session
- 12:00 Adjourn
- 1:00 Continuing Education Session - GIS/GPS  
Technology

## CONTINUING EDUCATION WORKSHOP UPDATE

by Loraine Fries

The first-ever Texas Chapter Continuing Education Workshop will be held immediately following the annual meeting at the Hilton in College Station on September 12, 1995. The topic of this workshop is Geographic Information Systems/Global Positioning Systems and will include discussion of TPWD programs using GIS and information exchange, existing and future technologies, data collection, and analysis possibilities, and limitations for research and management. There will be a hands-on demonstration using GPS equipment during the 4-hour workshop. For additional information on the workshop, contact Fred Janssen at 512/389-4921.

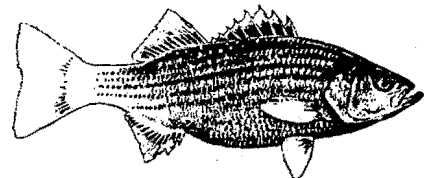
The workshop is open to all chapter members. TPWD Inland Fisheries Technicians should note that this workshop *will qualify for continuing education requirement of the career ladder*. Make your plans to attend preregister. You will be able to sign up for the workshop at the meeting, but we would like to know how many people to expect.

### PRE-REGISTRATION and HOTEL

If you'd like to **save some money**, and who doesn't, please fill out the pre-registration form (the yellow piece of paper). Pre-registration gives us an idea of how many people to expect at each of the meeting activities.

When making reservations at the College Station Hilton tell them you're with TCAFS and would like the special convention rate. In order to take advantage of this rate **you must make a reservation by September 1**. The Hilton can be reached at (409) 693-7500. Room rates are \$55 single and \$75 double. A pool and weight room are available.

The College Station Hilton can be reached by taking the HWY East bypass around College Station and turning west onto University Drive. The Hilton is 2 miles on the right as you go toward Texas A&M University. A map is provided at the end of the newsletter.



## SPECIAL OPPORTUNITIES FOR STUDENTS AT TEXAS CHAPTER MEETING

by Beverly Villareal

We're providing **free** lodging for student members at the meeting who do not reside in College Station/Bryan for Sunday and Monday nights. We have two double rooms for men and two double rooms for women which will be reserved for the first 8 students of each gender that call Beverly Villarreal at 512-353-3492.

Registration fees have been paid for students, compliments of the Texas Chapter. Therefore, all students who are members can attend the meeting for **free** and receive a **free** dinner at the social. Even though students do not pay a registration fee, **if you preregister, you will get the free goodies that other members get for pre-registering for the meeting.**

Our president-elect, Mark Webb, and others have made a huge effort to make this meeting especially student-friendly. Be sure to take advantage of the special **CAREER DEVELOPMENT WORKSHOP and CAREER FAIR** on Sunday, September 10, in the College Station Hilton ballroom from 1:00 to 5:30 p.m., followed by a Student/Professional mixer. Opportunities like this are extremely rare during a student's career so make the most of it! Here's the schedule for Sunday:

1:00 - 3:00 pm Career Development presentations in the Ballroom

1:00-1:30 Bill Harvey - Academic Preparation

1:30-2:00 Mike Reed - Internships and Summer Jobs

2:00-2:30 Loraine Fries - Applications and Interviewing

2:30-3:00 Lance Robinson - Professionalism

3:00 - 3:20 pm Break

3:20 - 5:30 pm Career Fair in the Ballroom

There will be approximately 20 representatives set up at tables from the following agencies, departments, and university:

**National Marine Fisheries Service**

**US EPA**

**Department of the Interior (USFWS and NBS)**

**Texas Natural Resource Conservation Commission**

**Texas Parks and Wildlife Department**

**Texas A&M University**

and from the private sector commercial operations of:

**Lake Management**

**Aquaculture**

**Environmental Consulting**

**River Authority and Industry.**

6:00 - ? Student/Professional Mixer in the hospitality suite

TO REITERATE A POINT: This opportunity will probably not come around again while you are a student! Therefore, it is an **INVALUABLE** opportunity. Prepare for it by coming armed with questions and a resume if you have one for constructive review. The **CAREER DEVELOPMENT** segment will be presented by people who were once students like you; learn from their insight on ways to help you **SUCCEED** in a very competitive field. The **CAREER FAIR** is designed to help you know what fisheries-related career options are out there, so be **BOLD** and **DELIBERATE**, and get the low-down from representatives who are **READY, WILLING, and ABLE** to divulge all, just for the asking.

Afterwards, relax with snacks and beverages at the Student/Professional Mixer and get to know more members in the Texas Chapter. As students, it is easy to feel isolated from the "real" world, but this is your opportunity to expand your contacts and familiarize yourself with a network of fisheries professionals.

Also, don't forget to "check out" the Student Information table which will be adorned with a myriad of informational packets on different graduate programs

### TCAFS GOLF TOURNEY



Get your clubs out and your competitive spirit ready. This year's TCAFS golf tournament is being organized by Ken Kurzawski. Ken can be reached at (512) 389-4591 for details regarding this annual event. Can anyone bring down the reigning champs?

### TEXAS A&M UNIVERSITY CHAPTER of the AFS FISH FRY MENU

by Ian Klein - President

Our chapter has been busy readying itself for the upcoming TCAFS meeting. Thanks for extending an invitation for us to volunteer to work at your social! Tentatively we plan to offer the following menu:

**Fried Catfish, Cajun Fried Catfish, Grilled Lemon Pepper Catfish, Hush Puppies, Potatoe Salad, Cole Slaw, Baked Beans, Bread, Soft Drinks, BEER!**

Catfish are graciously being discounted for the TCAFS meeting by Dr. Gatlin from TAMU and donated by Mr. Summers of Robertson county!

---

## EXHIBITS/PUBLICITY COMMITTEE

*by Mark Stacell*

The Exhibits/Publicity committee has been busy soliciting donations and vendors for the annual meeting. To date, we have nine vendors coming to display goods, services, and fish and wildlife art. A representative from Merrill Lynch will also be on hand to offer investment information to anyone interested, and will also be donating a family financial planning package valued at \$175.00.

Three kegs-o'-beer have been donated for the social, and about 13 cases will be on hand for the student/professional mixer - Yip Yah!. Raffle and auction prizes are rolling in, with some pretty neat stuff to look forward to. You won't want to miss it!

Did you know that \$700.00 was taken in during last year's auction from items made and donated by our own TCAFS members? Its true, and we need help from our members again this year. Whether your specialty is restoration, hand-crafting, welding, sewing, stained glassing, or any other creative endeavor, you can really help the Chapter's auction. The hand-made items are often the most interesting and valuable items we get, so please, lets have a nice collection of auction items again this year.

## COLLEGE STATION SPECIAL ISSUES SESSION

*by Mike Reed*

There are a wide variety of environmental problems facing aquatic scientists throughout Texas. Since many of these problems are regionally specific, aquatic professionals from throughout the state are often uninformed about particular situations. To facilitate better communication and to educate the general membership about some of the serious issues challenging Texas' aquatic resources, a special issues session will be held at the annual meeting. Several topics will be addressed by invited speakers experienced with particular issues. This session will be held prior to the business meeting to allow the membership to discuss any action the TCAFS might take in response to any issue. The "top issues" being considered for presentations include: introduction of exotic aquatic species, recent changes in aquaculture discharge regulations, the Red River Chloride Reduction project, the private lands-endangered species controversy, and the Trans-Texas Interbasin Water Transfer Project. The session is being organized by Nick Parker (806) 742-2851 and Mike Reed (512) 547-7225. Please let them know if you would like for any of these or other issues to be addressed.

## OUTSTANDING PEOPLE AND OUTSTANDING PRESENTATIONS

*By John Moczygemba*

One final reminder about the deadline for OUTSTANDING FISHERIES WORKER and SPECIAL RECOGNITION, the deadline is **August 15**. The nominations should be mailed to me at the Lake Texoma Fisheries Station, Route 4, Box 157, Denison, Texas 75020 or fax to 903-786-9871. I forgot to mention in the last newsletter that members of the Committee are not eligible for the above awards. The members are myself, Mike Ray (Administration), Robert Vega (Culture), Dr. Kirk Winemiller (Education), Jeff Henson (Management), Dr. Ray Drenner (Research), and Floyd Teat (Technical Support). If you already have it written up, keep it until next year.

For those of you getting your technical presentation ready, here are the procedures that are used for selecting the **OUTSTANDING PRESENTATION** at the annual meeting.

### **Outstanding Presentations at the Annual Meeting**

o Prior to the presentations, 4-6 judges will be picked and given evaluation sheets with the presentation criteria attached.

o The judges will score the presentations based on the presentation criteria. The judges will then rank all presentations from 1 to n. The ranking of the presentations will be given to the committee chairman at the end of technical session.

o The Outstanding Presentation and Outstanding Student Presentation will be determined by the presentations with the highest average ranking given by the judges. If the Outstanding Student Presentation has the highest overall ranking, the student will receive both awards.

o The committee chairman will keep the Outstanding Presentation confidential until the award presentation at the following annual chapter meeting.

### **Criteria for Selecting Outstanding Presentation at the Annual Meeting**

1. Introduction (10 points) - Does it provide adequate justification for doing the study? Does it grab the attention of the audience, or lose them?

2. Methods (10 points) - Is it clear what was done? Are methods described in too much or too little detail?

3. Organization (10 points) - Does the presenter follow a clear, logical, and effective sequence that gets his/her point across and keeps the audience's attention.

4. Originality (15 points) - This is a judgement of how close the content is to the "cutting edge" of fisheries or how innovative a researcher has been in designing/

conducting a study.

5. Technical Merit (20 points) - Were the study design and analyses appropriate? Do the interpretations come clearly from the results?

6. Delivery (15 points) - Voice quality, enthusiasm, eye contact, articulation, etc.

7. Visual Aids (15 points) - Your judgement of their simplicity, comprehensibility, and effectiveness.

8. Other Considerations (5 points) - Not an automatic category, save this for unique or extra things that a speaker has in their presentation (e.g., good use of humor or metaphors).

9. Comments - Feel free to make any comments you care to, these may be used in the event of ties.

## PROFESSIONAL DEVELOPMENT



### Making a Winning Presentation

With the Texas Chapter meeting looming ahead, presentation considerations will intensify for many of us. Not only do you have to worry about getting the technical aspects correct for the information that you want to present, but also the actual mechanics of presenting the information. You may have the best information in the world, but if it's not presented clearly, then your audience will not benefit from it as you had intended. So what are some tips on making better presentations?

#### Consider Your Audience

First, when creating your presentation slides or overhead transparencies, consider your audience. What is their background, how much are they going to know about your subject matter? Talking over an audience's head is a sure way to have them tune out what you're saying. If there's technical jargon, take some time to explain it. Make an attempt to simplify complex relationships.

#### Slide Appearance Guidelines

To ensure adequate viewing of your slides on the

screen, create them with a horizontal orientation as opposed to vertical. Never use a slide for which you are tempted to apologize. You risk alienating your audience if they have to make too much effort to see what the slide is about. Also, it's a great help to have someone proofread your slides; a presentation with misspellings casts a poor reflection on the presenter.

#### Text

Keep your fonts simple, large-sized, and consistent. Remember the people who will be sitting in the back of the room--will they be able to read your text from that distance? A rule of thumb is to keep your text size at least 20 pt. Text should be a few key words or paraphrased wording so that the audience isn't busy reading your slide instead of listening to you. Try to limit your information to one thought per line of text and use 6 to 8 lines maximum on a slide.

#### Color

When using color, make sure the contrast between the background and the text is sufficient so that the text doesn't blend into the background. This is especially important when lighting in the presentation room is either too light or too dark. Dark background colors are generally advised; dark blue or gray, medium blue, aqua and some shades of greens and browns are known to work well. If you use white letters on a dark background, it's probably better to go with an off-white or light gray instead of pure white. From the back of the room, the white can tend to jump out at the viewer and blur the letters or look piercingly bright, so softening the white can help. Due to variations in hardware capability, sometimes the colors you see on the computer monitor are not the same shade of color imaged to your slide film. Give yourself some leeway to have corrections made in case this type of problem occurs and results in a slide with poor contrast or color clashes. Also, remember it's the information you want people to focus on and don't let color become a distraction. One guideline is to use a maximum of four colors with two accent colors for emphasis of important text.

#### Make Use of Charts and Graphs

To synthesize results, use charts or graphs of your data. Critically analyze the chart or graph and ask yourself if it's too busy, does it have too much information that would be better displayed by using two graphs, and will people be able to get the gist of the data in the time that they'll be able to look at it.

#### Maintaining Audience Interest

To keep the audience's interest in your presentation, don't read from your notes or directly off the slide, keep them in outline form, and unless you're proficient

at extemporaneous speaking, practice sufficiently so that you know what you want to say about a point. Also, there's some very nice presentation software available, and the capabilities of the graphics and formats go a long way toward incorporating variety into the look of your presentation while still maintaining cohesiveness. Making use of bullets and enumerating points help to maintain visual interest.

### **Dealing with Nervousness**

If you have a tendency to get nervous speaking in front of a group, realize that the vast majority of people feel the same way you do. By using a couple of tricks, you can tone down the degree of nervousness. Watch your breathing; if your breathing is rapid and shallow, you can relax by breathing deeply from your stomach. Look over your audience so you can recognize that your audience is just people interested in hearing what you have to say. Also, a direct gaze establishes rapport and communicates a sincerity and confidence, especially when emphasizing important points. Remember, also, that in many cases you will be in a situation of knowing more about your subject matter than most of the people in the audience--you are the authority, so this should give you more confidence.

If you need to protect your voice from cracking or speaker's laryngitis, take some water to the podium with you and sip it as needed, or sip it if you need a moment to think before answering a question. You can make notes to yourself as a reminder to slow down at different points in your presentation, or to speak loudly, or to breath, etc. Watch out for distracting mannerisms; don't jiggle money or keys in your pockets, limit gestures to emphasize important points, and minimize "uh's", "um's", and "you knows." Check out the room where you will be giving the presentation, see where you'll be standing and where you can place your support materials; familiarity can increase your comfortability. This preview can help you with visualization exercises; imagine yourself giving a great presentation in that setting.

Probably the best way to feel confident and, therefore less nervous, is to overprepare. Run through your presentation as often as you need to make it flow smoothly; be aware of rough spots and spend extra time working them out. Go over it a couple of times a day, several days in a row before the presentation. If you don't normally talk for 15 or 30 minutes at a time, start practicing at least several days ahead to condition your voice to last that long. You'll find that your presentation will almost run on automatic if you've taken the time to practice, practice, practice. But remember to keep speech patterns fresh so you don't sound rote or robotic.

If you're worried about what people might ask you after your presentation, think of possible questions and hone answers to them. Don't be afraid to say, "I don't know the answer to your question. That's a little beyond the scope of the study" or "That's a good question, but it was not addressed by our study." You'll come off looking more competent by admitting you don't know and appearing intrigued by the question than if you start making up answers. Afterall, science proceeds by asking a series of questions, and probably every study succeeds in answering some questions and creating even more.

You can save yourself a lot of grief and spare your composure by double-checking that your slides are loaded correctly into the carousel prior to your presentation, especially if you moved slides around or added some at the last minute. It's very easy to think you're loading them correctly and then be surprised and embarrassed when they show up backwards or upside down during your presentation.

### **Rapport--Make It, Don't Break It**

Finally, a few last tips for a really polished performance. Don't start your presentation with an apology. Establish rapport with your audience early by making eye contact during the first 30 seconds of your presentation. That means knowing exactly what your first introductory statements are so you won't be tempted to read from your notes. During the presentation, don't stay tied to the podium. Move to the screen and draw attention to the points you are making, or move away from the podium at other times; the audience will perceive you as relaxed and comfortable which helps make the audience relaxed and more receptive to your message. Don't lose your rapport at the end by reading your closing remarks from your notes. To really increase the effect and end with a bang, turn off the projector and speak directly to the audience without a visual.

### **Learn From the Experience**

After you've given your presentation, evaluate your performance to reinforce the positive and make a mental note to do better about pacing your speech, maintaining eye contact, etc., the next time you present. It's difficult to get everything right, but relax and view every performance as a learning experience. Remember, if you're a professional, there's always a next time!





## STUDENT ADVISEMENT

### A Perspective on an Internship Experience

by Beverly Villarreal and guest columnist Tannika Engelhard

*I met Tannika Engelhard while she and others from the Uvalde National Fish Hatchery (UNFH) were helping tag paddlefish at the A. E. Wood Hatchery. Loraine Fries had learned Tannika was an intern at the UNFH with the AmeriCorps program and suggested that Tannika would be a good person to interview for the student column in the Texas Chapter newsletter. I had read some about AmeriCorps. It seemed kind of like the PeaceCorps but it was domestic, not international, and the article I read centered around a group working with a gang-infested neighborhood in Austin. Clearly, there were quite a few aspects to this AmeriCorps. Fortunately Tannika agreed to be the guest author for this column and explain how and why she became involved and how her internship has benefitted her--and, just as importantly, how other students can have a similar opportunity. Tannika started as an SCA/AmeriCorps member in October 1994 and will be finished with her "tour of duty" in August. Thanks Tannika for a very informative, candid look at your internship experience.*

"Why the heck did you move to Uvalde, Texas?" This is the response I get every time I tell someone that I am from California. People are astonished to find out that someone would move from "The City by the Bay" (San Francisco) to a city of 15,000 residents in the middle of Texas to work at a fish hatchery. The next question usually asked is "Why not work at a fish hatchery in California?" I can only reply by explaining the circumstances that brought me to a freshwater hatchery in Texas.

In June of 1994, I graduated from California Polytechnic State University in San Luis Obispo, CA, with a B.S. in Biological Sciences and a concentration in Marine Biology. I decided to take a year off before applying to graduate school, but realized that I had to do something. It had to be something that offered me resume-building experience in biology. While I was researching my options, I recalled an internship program mentioned by my adviser that is offered through the Student Conservation Association (SCA), called the Resource Assistant Program. The program places people 17 years or older, who have a high school diploma or GED, in national parks and refuges around the United States. The job descriptions range from trail restoration to exotic plant removal to environmental interpretation. Interns are not paid, but

food, housing, and initial travel are taken care of. The "not paid" part was not very appealing, but for a prospective graduate student with an interest in field work and research, hands-on experience far outweighs a paycheck. Just as I was completing my application for a Resource Assistant position, I received a letter about a new program through SCA called AmeriCorps:

The SCA/AmeriCorps Program is cooperatively operated by the Department of the Interior and the SCA to address the Nation's environmental needs through projects across the country to conserve, restore and sustain natural habitats. The program will achieve results for the environment by restoring and conserving the public lands in both urban and rural settings, making parks and wildlife refuges more accessible and monitoring the status of air, water, plants, and animals. The program will train members in the specific skills needed for their projects and will help them become "lifelong environmental problem solvers"; will foster civic responsibility, strengthen the values that bind us together as a people, and provide educational incentives for those who make substantial commitment to service...

SCA operates four AmeriCorps programs in cooperation with federal, state, and local agencies. SCA's New Hampshire Conservation Corps manages the **White Mountain National Forest AmeriCorps** in cooperation with the U.S. Forest Service, and the **AmeriCorps at Monadnock** program with the New Hampshire Department of Parks and Recreation. In Florida, SCA helps the Department of the Interior accomplish the **Everglades South Florida Ecosystem Project**. SCA also helps the Department of the Interior with the **Rio Grande Valley Ecosystem Project** in Texas, New Mexico, and nearby states. Members are required to be at least 17 years old, and hold a high school diploma or GED. Paychecks and health insurance are provided by SCA. Members are paid \$4.25 an hour and work from 20-40 hours per week. Housing, meals, and transportation expenses are not paid. Some project locations may provide low cost housing. Through a nationally recognized internship program called "Partners with Professionals", SCA/AmeriCorps members can earn up to 12 undergraduate credits. More important for me, members receive an educational award with the completion of each term of service. The educational award is \$2,363 for a 900-hour position (5 months) and \$4,726 for a 1700-hour position (10 months). The educational award can be used in several ways. It can be used to pay tuition for two- and four-year colleges and universities, training programs and graduate or professional programs. The award can also be used to pay off existing and future student loans. The monetary benefits looked





good, but it was the project listings that really impressed me.

The ecosystem projects intrigued me right away. The Everglades Florida Ecosystem project was designed as a response to the ecosystem's rapid deterioration under the combined pressure of population growth, development, habitat destruction, agriculture growth, recreational use, and urban encroachment. Project sites are in South Florida and operated by US Fish and Wildlife Service, the National Park Service, and nonprofit partners, including the Nature Conservancy and Florida Baywatch. Members participate in wetland restoration, hydrology studies, baseline inventories, endangered species studies, community ecology studies, exotic species evaluations, environmental education programs, and more. The Rio Grande Ecosystem Project was designed to conserve native habitat and protect threatened and endangered species that may be affected by the North American Free Trade Agreement (NAFTA). Project sites are in Texas, New Mexico, and adjacent states and are operated by the US Fish and Wildlife Service, the National Park Service, Bureau of Land Management, and state agencies. Members participate in mapping, surveying, population monitoring, air/water quality monitoring, habitat restoration, raising populations of rare plants and animals for release or reintroduction, and more. The project sites in both ecosystems include refuges, federal and state ecological service offices, fish resource offices, federal hatcheries, and national parks. SCA required that I list at most four project sites on my application, so I listed two hatcheries, one refuge, and one ecological service office. SCA receives the applications and tries to match the applicant's interests and skills with the needs of the project site. If the applicant's skills and interests match up with the needs of the project site, SCA sends the application to the site. If the applicant's skills do not meet the needs of a project site listed on the application, the application is not sent to that site. Instead, SCA works to match the applicant's skills with the needs of other project sites. SCA sends the applicant a postcard listing which project sites the application was sent to. Hiring decisions are made by the Project Leader at each site, not by SCA. Interested Project Leaders will call the applicant for a telephone interview. I was most interested in working on a hatchery and fortunately, the Uvalde National Fish Hatchery called. In the phone interview with the Uvalde NFH Project Leader, I expressed my expectations as an AmeriCorps member and he expressed his expectations of me as an employee. After further discussion about the hatchery, the city of Uvalde, the climate, living and transportation arrangements, we set a start date.

I am currently finishing my second 900-hour term at the Uvalde NFH. When I started, I had book-knowledge only. Now I have first-hand experience in all aspects of warmwater fish culture. I have performed a range of duties at the Uvalde NFH. In November, I began a catfish strain evaluation. It is a two-part evaluation that compares three strains of channel catfish reared on the hatchery based on morphological differences and differences in culture characteristics (survival rate, growth rate, feed efficiency, and spawning percent). Using data from my strain evaluation and with assistance from the San Marcos National Fish Hatchery and Technology Center in San Marcos, Texas, I put together length/weight tables specific for each strain of channel catfish reared at the Uvalde NFH. I am also completing a report on the techniques used at the Uvalde NFH to pellet train Florida largemouth bass fry. My fish culture duties included feeding, feed inventory, water quality monitoring, helping with stocking and harvest, and helping with channel catfish and Florida largemouth bass spawning and larval fish maintenance. I have also participated in various community service projects. From 12/94 to 02/95, I helped 6th graders from local schools with a three-month long 4-H project maintaining a pond of catfish. The students monitored water quality and water level changes, and I explained the causes and effects of their results. At the request of the local high school, I gave a slide presentation about the Uvalde NFH. Aside from the projects and duties I have listed, I was also allowed to do short-term work with other federal and state agencies.

I had the opportunity to work with other U.S. Fish and Wildlife Service offices and with Texas Parks and Wildlife. I worked with the Corpus Christi Fisheries Resource Office (USFWS) on two week-long trips to survey fish populations and monitor water quality. The first trip was to San Bernard and Big Boggy Refuges on the Gulf Coast. The second trip was to the Alabama-Coushatta Indian Reservation and the Trinity Refuge in East Texas. I helped the staff from the Heart of the Hills Research Station (Texas Parks and Wildlife) implant 102,230 paddlefish with coded-wire tags. The tagging was done at the A.E. Wood State Hatchery in San Marcos (Texas Parks and Wildlife). These projects enabled me to visit different parts of Texas, gain work experience in areas besides the hatchery, and network with other agency Project Leaders and personnel. A combination of initiative, hard work, and networking put me on a path that will keep me in Texas for at least another two years.

I have been accepted to begin graduate courses at Texas A&M-Corpus Christi toward an M.S. in Biology. My hard work and initiative as an AmeriCorps member

paid off in personal recommendations made by several people within the U.S. Fish and Wildlife Service. It is a great feeling to sit down for an interview with a graduate professor and hear that he has already been assured of your dedication and work ethic in a personal phone call--from an associate in the U.S. Fish and Wildlife Service. Work experience and recommendations make all the difference in the world. I should know. Three weeks before learning about the graduate program at Texas A&M-Corpus Christi, I received a letter denying me admission to the graduate program at yet another university. I have a B average and an adequate GRE score, but the competition is tough and space is limited. The professors at Texas A&M-Corpus Christi were interested in me primarily because of where I worked, the type and the quality of the work I did, and who I worked with. Their interest in my grades and scores was secondary. Again, experience makes all the difference.

I'm not trying to be a poster child for SCA/AmeriCorps, but the experience has benefitted me in many ways, personally and professionally. I would recommend the AmeriCorps program and the Resource Assistant program to anyone who wants to experience new places and people, and gain valuable experience in work and in life. SCA members should work to get everything out of the experience that they can, because it will benefit them in the future. If anyone has questions, feel free to contact me at the Uvalde NFH (210) 278-2419. For more information about SCA and its programs, contact SCA:

SCA/AmeriCorps or Resource Assistant Program  
P.O. Box 550 Charlestown, NH. 03603  
(603)543-1700

## CANDIDATES for TCAFS OFFICES

*by Bobby Whiteside*

Elections for the offices of President-Elect and Secretary/Treasurer will be held at the annual meeting. Resumes of each candidate are being published for the membership to review before voting.

**Nick C. Parker**, Nominee for President-Elect TCAFS

### EDUCATION

B.S. and M.S. in Biology from Memphis State University

Ph.D. in 1977 from Texas A&M University

### WORK EXPERIENCE

1989-present - Leader Texas Cooperative Fish and Wildlife Research Unit at Texas Tech University, National Biological Survey since 1989.

1982-1989 - U.S. Fish and Wildlife Service, Southeastern Fish Culture Lab, Marion Alabama where I held several positions including Scientific Director.

### Activities Associated with the American Fisheries Society

Life member since 1988

Two Best paper Awards from the Southern Division AFS

Past President of the Southern Division AFS

Past President of the Texas A&M Chapter AFS

Past President of the Fish Culture section AFS

Past President of the Introduced Fish Section AFS

Served as Chair of the Southern Division's Publication Overview

Served as Chair of the Southern Division's Nomination Committee

Served as member of the Southern Division's Professionalism Committee

Served on the editorial board of Transactions of the American Fisheries Society

Served on the Editor Search Committee for Progressive Fish-Culturist

Chaired the Advertising and Display Committee of AFS since 1979

**Katherine Ramos**, Nominee for President-Elect TCAFS

Katherine Ramos is currently employed by the Texas Parks & Wildlife Department (TPWD) as the Manager of the Tyler State Fish Hatchery. She received a Bachelor of Arts degree in Biology from Southwest Texas State University (SWTSU) in 1983. After working in the private sector for three years, she returned to SWTSU to earn a Master of Science degree in Wildlife and Fisheries in 1988. Her career in fisheries began in 1988 when she worked as a seasonal Biological Aide for the U. S. Fish and Wildlife Service at the San Marcos National Fish Hatchery and Technology Center. In 1989, she was hired as a Fish & Wildlife Technician at the A. E. Wood State Fish Hatchery in San Marcos. In 1990 she was promoted to the position of Fish Health Specialist with the newly formed Fish Health Unit, headquartered at the A. E. Wood State Fish Hatchery. She occupied this position until her promotion to Hatchery Manager at Tyler in October of 1994.

Her focus throughout her career has centered on fish culture, fish health and genetics. She has conducted scientific investigations into topics such as paddlefish sunburn and analysis of spawning stress in largemouth bass using blood chemistry. A manuscript entitled Fish Health Management Guidelines for Texas Hatcheries is currently undergoing peer review and should be

published TPWD soon.

Katherine has been an member of the Texas Chapter AFS since 1989 and a member of the parent society since 1990. She has served the Chapter in a variety of ways. In 1991, she was a member of the Arrangements Committee for the annual meeting of the parent society in San Antonio. She has assisted newsletter editors Pat Hutson and Joe Fries and served as Secretary/Treasurer since the 1993 meeting.

**Veronica (Ronnie) Pitman**, Nominee for Secretary/  
Treasurer

#### **EDUCATION**

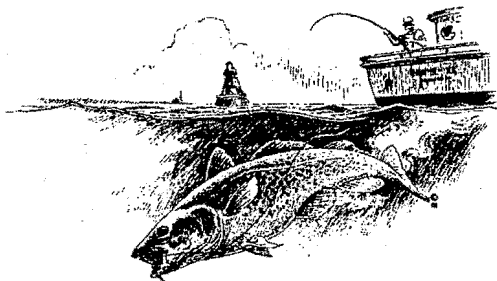
1970 BA History, University of Colorado  
1984 MS Wildlife and Fisheries Sciences, Texas  
A&M University

#### **WORK EXPERIENCE**

1988-Present - Fisheries Research Biologist, Texas  
Parks & Wildlife Department; Coordinator,  
Texas Paddlefish Recovery Program.  
Experience includes: writing research  
proposals; writing, executing and monitoring  
endangered species recovery plans; conduct-  
ing creels; studying initial post-stocking survival  
of hatchery reared fishes, effect of recharge  
waters on spawning of largemouth bass in  
power plant reservoirs, fish movement using  
radio-telemetry, fish survival using  
coded-wire and passive integrated transponder  
tags, fish habitat use and spawning; and  
publishing and presenting research findings.  
1985-1988 - Fisheries Management Technician,  
Texas Parks & Wildlife Department.  
1984-1985 - Manager, Running High Fishing and  
Hunting Club, McCommon's Oil Company.  
1979-1984 - Fisheries and Natural Resources  
Laboratory Instructor, Texas A&M University.

#### **Activities Associated with the American Fisheries Society**

American Fisheries Society, Parent Society  
Endangered Species (Member 1990-93)  
American Fisheries Society Southern Division  
Warmwater Streams (Member 1991-92)  
Pollution (Member 1992-93)  
American Fisheries Society Texas Chapter  
Membership (Chairman 1991-present)



**David R. Terre**, Nominee for Secretary/Treasurer  
TCAFS

#### **EDUCATION**

University of Wisconsin-Stevens Point  
1981 - B.S. Water Resources (Fisheries and  
Limnology emphasis)  
1981 - B.S. Biology  
1981 - Resource Management  
Texas Tech University, Lubbock, TX  
1985 - M.S. Wildlife Sciences (Fisheries  
Management emphasis)  
Thesis: Genetic Stock Structure of Walleye in Lake  
Meredith, Texas with Implications for  
Management

#### **WORK EXPERIENCE**

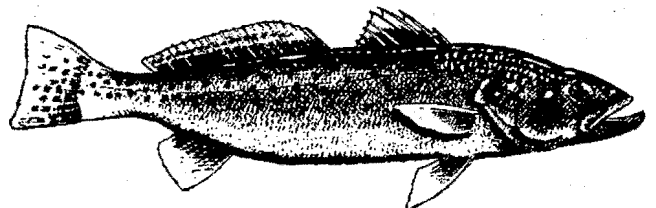
1989-present District Management Supervisor,  
Fisheries Management Texas Parks and  
Wildlife Department (TPWD)  
1987-1989 Assistant District Management  
Supervisor, Fisheries Management - TPWD  
1985-1987 Fisheries Technician, Fisheries  
Management - TPWD  
Research Associate, Fisheries Research - Texas  
Tech University  
Field Crew Leader, Fisheries Research - Oregon  
Department of Fish and Wildlife  
Fisheries Research/Teaching Assistant - Texas Tech  
University, Lubbock  
Fisheries Technician, Fisheries Management -  
Wisconsin Department of Natural Resources  
Total Experience in Fisheries: 14 years

#### **Activities Associated with the American Fisheries Society**

AFS member since 1982 (Life member in 1993)  
Texas Chapter AFS Member since 1982  
Awards Committee Chair - 1988-1991  
Awards Committee Member - 1987-88  
Editorial Committee 1988-90  
Urban Fishing Committee 1985-86 and 1989-90  
Audio Visual Committee Chair for National AFS  
Meeting, San Antonio - 1991  
Audio Visual Committee Chair for SEAFWA  
Meeting, Corpus Christi - 1992  
Program Committee Member (Fishing tournament  
organizer for 1994 meeting) - 1993-94

#### **Awards**

Texas Chapter AFS Fisheries Worker of the Year  
(Management)-1990  
Southern Division AFS First Place Paper Citation -  
1992



## NATIONAL RESERVOIR SYMPOSIUM BRINGS MANAGERS TOGETHER

by Gene Wilde

Over 225 reservoir fishery managers and scientists from around the country gathered in Chattanooga, Tennessee, on June 12-14 of this year for the Third National Reservoir Symposium. The symposium was organized by the Reservoir Committee, Southern Division American Fisheries Society, and sponsored by the Tennessee Valley Authority, U.S. Army Corp of Engineers, and the U.S. Fish and Wildlife Service. The theme of the symposium, Multidimensional Approaches to Reservoir Fisheries Management, was adopted in recognition of the growing need for fisheries professionals to be knowledgeable in areas such as angler (public) opinion, economics, marketing, risk assessment, and public health, that are not covered as part of most fisheries education programs.

Including four introductory papers and a symposium summary by John Ney ("A Chattanooga Chew-Through"), 47 papers were presented. Presentations were grouped into nine general sessions, Introduction, Administrating and Marketing Reservoir Fisheries (convened by Texas Chapter AFS member Dick Luebke), Environmental Assessment, Competitive Fishing and Angler Perspective, Facilities Management, Socioeconomics and Optimum Yield, Habitat Management, Aquatic Macrophytes as Habitat for Reservoir Fish, and Data Collection and Analysis.

Six presentations were authored or coauthored by members of the Texas Chapter AFS: Mike Costello and Bob Betsill, "Factors Affecting Fishing-Success Ratings at 15 Texas Reservoirs"; Bob Ditton, "Understanding the Diversity Among Largemouth Bass Anglers"; Kevin Hunt and Bob Ditton, "Using Survey Research in Support of Fisheries Management: The 1994 Texas Statewide Angler Survey"; Richard Ott and Mark Webb, "On-Site Weight-Certification Facilities-- A Service to Anglers, a Tool for Managers"; Robin Riechers and Tony Fedler, "Economic Impact and Value of Recreational Fisheries"; and Gene Wilde and Bill Fisher, "Reservoir Fishery Sampling and Experimental Design." Also from Texas, Jerry Dean, publisher of Honey Hole Magazine, spoke on the "The Role of Angler Organizations in Fisheries Management."

Texas Chapter members John Dennis, Spence Dumont, Loraine Fries, Jeff Henson, Mark Howell, Francis Mann, Mike Reed, Mike Ryan, Andrew Sipocz, Dan Strickland, Mark Webb, and Mike Wilkerson combined efforts for a total of eight poster presentations. The presentation by Mark Webb, Francis Mann, Andrew Sipocz, and Mike Reed, "A Comparison of

Juvenile and Forage Fish Occurrence along Natural, Rip-rapped, and Bulkheaded Shoreline Habitats In Lake Conroe, Texas," received the Best Poster Award.

The symposium was successful in accomplishing its goal of bringing together reservoir fishery biologists to discuss methods and subject matter outside that traditionally viewed as part of fisheries management and taking a new look at, or giving new direction to, more conventional subjects. The published proceedings, which should be available early next year, will be an important resource for reservoir fishery managers for many years to come.

## 24th Fish Feed and Nutrition Workshop October 19-21, 1995 Columbus, Ohio, USA

by Beverly Villarreal

The Fish Feed and Nutrition Workshop is being organized this year by the Ohio State University. Topics that persons have expressed an interest in seeing on the program are:

- Bioavailability data and methods for phosphates and amino acids
- Strategies to increase feed digestibility in fish; optimum energy :protein ratios for different life stages in salmonids
- High nutrient dense diets, feeding programs, effect on carcass quality, etc.
- Larval digestive physiology
- Larval culture
- Similar topics as presented in previous workshops
- Intermediary metabolism of specific nutrients
- Most recent developments in fish nutrition, feeding regimes and feed technology
- Larval diets, carotenoid research, other fish ingredient evaluations, etc.
- Phosphorus requirements of tilapia
- Extrusion processing of aquaculture feeds--conditions for floating versus sinking pellets
- Digestive physiology
- Alimentary canal development
- How to evaluate product quality--catfish, salmonids, and others
- Reduction of phosphorus through higher digestibility
- Ingredient quality
- Factors concerning feed intake

The organizers request that persons interested in attending let them know of your plans as soon as possible. A tour to an aquaculture facility or fishing for walleye and yellow perch in Lake Erie are being considered for Saturday. Contact Gayle Sylvester or Konrad Dabrowski by phone at (614)688-3135 or (614)292-4555 for more information on the meeting.



## BYLAW AMENDMENTS

Following are proposed amendments to the Chapter Bylaws for consideration by the membership. The proposal is to up-date the by-laws to better correspond with present Chapter activities. The Bylaws of the Chapter may be amended by a two-thirds majority approval of those members voting, provided that notice of the proposed changes is given to the membership at least 30 days prior to the meeting. Following approval by Chapter membership, bylaw amendments will be submitted to the Society's Executive committee for approval. The final vote on the proposed changes will be at the annual meeting.

### BYLAWS TEXAS CHAPTER-AMERICAN FISHERIES SOCIETY

#### Section 1

##### *Name and Objectives*

The name of this organization shall be the Texas Chapter of the American Fisheries Society, hereinafter referred to as the Chapter.

The objectives of the Chapter shall be those of the American Fisheries Society as set forth in Article I of the Constitution and to encourage the exchange of information by members of the Society ~~residing within the State of Texas.~~ **Chapter.**

#### Section 2

##### *Membership*

The membership of the Chapter shall be composed of members in good standing. ~~residing in the State of Texas.~~ **Members pay dues annually and their membership extends through the calendar year (only) for which dues are paid.**

#### Section 3

##### *Meetings*

The Chapter shall hold at least one meeting annually at a time and place designated by the Executive Committee. The program and presentation of papers shall be the responsibility of the ~~Program Committee.~~ **President-Elect.**

#### Section 4

##### *Officers*

The officers of the Chapter shall consist of a President, President-Elect and a Secretary/Treasurer.

Officers shall be elected at the annual meeting. The Secretary/Treasurer ~~may~~ holds office for a period of ~~longer than one~~ **two** years, but the term of the other officers shall be until the next annual meeting. In case of a vacated position, the Executive Committee shall appoint a qualified replacement to fill an unexpired term. The President-Elect shall automatically ascend to the office of President , **at the annual meeting or if the position of President is vacated.**

In the event of a cancellation of an annual meeting, the officers and the members of any committees shall continue to serve until the next scheduled meeting.

#### Section 5

##### *Duties of Officers*

The President of the Chapter shall preside at all meetings, shall serve as the ~~Chairman~~ of the Executive Committee, shall represent the Chapter to the Southern Division and to the American Fisheries Society, and shall make such appointments and perform other duties and functions as are authorized and necessary.

The President-Elect shall serve as a **member of the Executive Committee** ~~be Chairman of the Program Committee,~~ **shall plan and coordinate the program at the annual meeting,** and shall assume the duties of the President in the event of his/her inability to act.

The Secretary-Treasurer shall keep the official records of the Chapter, collect and be custodian of registration fees collected under Section 10 of these Bylaws, and of any funds which may be allotted to the Chapter. The Secretary-Treasurer shall disburse funds as may be authorized and necessary and shall submit a record of receipts and disbursements at the annual Chapter meeting.

#### Section 6

##### *Executive Committee*

The Executive Committee of the Chapter shall consist of the elected officers and the Immediate Past President. The committee is authorized to act for the

Chapter between meetings and to perform appropriate duties and functions. **Elected officers must be members in good standing of the Chapter and the American Fisheries Society.**

### Section 7

#### *Chapter Committees*

Committees and ~~the chairmen of the committees~~ **Chairs**, except those listed in Section 5 of these Bylaws, shall be members of the Chapter and shall be appointed by the President as may be necessary for the conduct of the Chapter activities.

The terms of office for members of Chapter committees shall end upon the discharge of the duties for which they were appointed, or at the next annual meeting of the Chapter, whichever comes first.

**Standing Committees are permanent committees established through the Bylaws of the Chapter. The Standing Committees shall be Awards, Editorial, Endowments, Issue, Membership, Nominating, Pond Management, Publicity/Exhibits and Student Outreach.**

**Ad Hoc Committees are created by the president to address topics that do not fall under the responsibilities of Standing Committees. Ad Hoc Committees exist for one year but may be reappointed for subsequent years by succeeding Presidents.**

### Section 8

#### *Election of Members*

Application for annual membership may be received by the Secretary-Treasurer of the Chapter at any time and dues shall be paid at that time.

### Section 9

#### *Voting and Quorum*

Decisions at meetings of the Chapter shall be by simple majority, except that changes to these Bylaws shall require a 2/3 majority of those present and voting. A quorum at any **annual** meeting for the transaction of official business shall be 20 members.

### Section 10

#### *Registration*

The Executive Committee may assess each registrant attending an annual meeting of the Chapter a registration fee necessary to cover the costs of the meeting and Chapter activities. Collections shall be made by the Secretary-Treasurer and disbursements shall be made for financing the Chapter operations, as may be directed by the membership or by the authorization of the Executive Committee.

### Section 11

#### *Amendments of the Bylaws*

The Bylaws of the Chapter may be amended and approved in accordance with Article VI, ~~Paragraph 3~~ **and VII** of the Constitution of the American Fisheries Society and by Section 9 of these Bylaws.

### Section 12

#### *Dividends Prohibited*

No dividends shall be paid and no part of the income of the Chapter shall be distributed to its members although compensation in a reasonable amount may be paid to its members for personal services rendered and upon dissolution of final liquidation, distribution to the members of any of the existing assets may be made, but only as permitted by the non-profit corporation act of the state of Texas.

## **EXCOM MEETING MINUTES**

*by Kathy Ramos*

An Executive Committee meeting was held on 11 July, in San Marcos. Members in attendance were Pat Hutson, Mike Reed, Mark Webb, Richard Ott, Ray Whitney, Bobby Whiteside, Beverly Villarreal, Dick Luebke, Ronnie Pitman, Loraine Fries, Nick Parker, John Moczygemba and Kathy Ramos. Ian Klein of the Texas A&M Chapter was a guest.

Pat called the meeting to order and it was determined that a quorum was present. The Treasurer's report was called for and delivered. Current Chapter assets including checking account and investment portfolio are \$28,436.69. Total gains from the last EXCOM meeting in April were \$664.07. Priced portfolio shows gains of \$1,750 since startup in November 1994.

COMMITTEE REPORTS



Steve Magnelia set the next newsletter deadline at 26 July 1995. Bulk mailing account has been set up at the San Marcos post office. The Special Edition newsletter will be out by 1 August to allow members to plan for the meeting.

Mark Webb reported that the Career Development seminar is scheduled for Sunday afternoon and will be divided into four 30 minute sessions covering different topics; Education, Summer Jobs Employment Applications and Interviews, and Professionalism. Texas Aquaculture Association will sponsor the Student/Professional Mixer on Sunday evening. After much discussion the group decided that in order to continue having a high quality professional meeting, that some type of registration fee should be charged to help offset expenses. This fee would be in the neighborhood of \$15 to \$20. The possibility of offering a preregistration discount was also discussed. A motion was passed that the chapter would sponsor student registration fees.

The Awards committee has received three nominations so far for Outstanding Fisheries Worker of the Year. The deadline for nominations is 15 August. John reported that committee members would not be eligible for the awards.

The Editorial Committee reported that the Proceedings of the 1994 meeting are ready to be printed. There were no full manuscripts submitted for publication so the publication will be made up of abstracts. The deadline for presentations to be made at this year's meeting is 1 August.

Dick Luebke reported that the Endowments Committee has received 9 applications for scholarship awards (6 graduate, 3 undergraduate). Because some students did not receive information from their university representatives in a timely fashion the deadline was extended. Dick proposed that next year students receive a special mail out regarding scholarships. A motion was passed that the Chapter sponsor an additional \$500 scholarship.

Ronnie Pitman has recorded 287 memberships paid for 1995, 38 of these are student members.

Bobby Whiteside reported that candidates for the upcoming elections have been selected. Brief resumes for each person will be published in either the regularly scheduled newsletter or the special edition. The candidates are as follows: President-Elect: Nick Parker and Kathy Ramos, Secretary/Treasurer: Ronnie Pitman and David Terre

Richard Ott and Mark Stacell have been busy contacting potential donors of raffle and auction items, tradeshow participants and sponsors for the student/professional mixer and social. The Texas Aquaculture Association donated \$200 for the mixer. The tradeshow will be limited to 15 exhibitors.

Mike Reed submitted a copy of the cover letter and position statement regarding the use of grass carp that will be sent out to legislators and interested parties for archival with the Secretary/Treasurer. He indicated that another potential exotic species issue, for consideration by the Chapter, may be the use of black carp as a biological control for zebra mussels.

Ray Whitney reported that revisions to the Guide for Developing Urban Fishing Programs are meant to broaden the scope of the document. The committee intends to have it edited and ready to print next year.

The Student Outreach committee is putting together a list of potential employers to invite to the annual meeting. Beverly is also working with artist Karen Holland on a t-shirt design to commemorate the Chapter's 20th anniversary. The EXCOM voted to provide funds annually to fund student projects, research, travel, etc.. Students will be asked to apply for funding to the Outreach committee, which will then review the applications and select those most deserving. Detailed proposals would then be submitted to the EXCOM for final approval.

Nick Parker proposed that the Chapter may want to issue a position statement regarding the Arkansas River shiner (*Notropis girardi*). The Issues committee will investigate the topic further and report back to the EXCOM for further action.

#### OLD BUSINESS

Loraine gave the group an update on the Continuing Education course that the Chapter will sponsor. The GSI course is scheduled for Tuesday afternoon, 12 September after the conclusion of the annual meeting. Members are asked to submit ideas for future workshops.

Plans for the Mid-Year meeting of the Southern Division - AFS are underway. Dick is working with the San Antonio Convention and Visitors Bureau to find hotel accommodations for the dates selected.

#### NEW BUSINESS

Nick Parker asked for the Chapter's support in the upcoming AFS 2000 fundraising campaign. It is a five year campaign to raise \$1.5 million to establish a publications endowment fund. AFS members will need to raise \$350,000.00 the balance will be made up of outside funding sources. Nick is looking for a volunteer from the Texas Chapter work on the committee for five years. The matter is under consideration by the EXCOM.

A motion to adjourn was passed. The EXCOM will not meet again until after the annual meeting.

*A big thank you to all the Newsletter contributors in this and preceding issues. It's great to work with such dedicated professionals.---Steve Magnelia/Editor*



**MEMBERSHIP APPLICATION AND RENEWAL  
TEXAS CHAPTER OF THE AMERICAN FISHERIES SOCIETY**

for the 1995 calendar year       for the 1996 calendar year

Name \_\_\_\_\_

Address \_\_\_\_\_  
\_\_\_\_\_

Work phone \_\_\_\_\_ Home phone \_\_\_\_\_

FAX \_\_\_\_\_

Primary Field of Interest \_\_\_\_\_

Affiliation \_\_\_\_\_

Check the two that apply:

Regular Membership (\$8/yr)

Student Membership (\$5/yr)  
(full-time students only)

AFS Member

Non-AFS Member

Send dues to:

Kathy T. Ramos  
11045 Spur 164  
Tyler, Texas 75709

If you have an interest in serving on a committee, check one (or more) of the following:

Awards

Issues

Pond Management

Exotic Species

Student Outreach

Editorial

Membership

Publicity/Exhibits

Procedures Manual

Fisheries Workers Directory

Endowments

Nominating

Newsletter

Urban Fishing

**EXECUTIVE COMMITTEE**

PRESIDENT..... Pat L.Hutson  
PRESIDENT-ELECT..... Mark Webb  
PAST-PRESIDENT..... Loraine T. Fries  
SECRETARY-TREASURER..... Kathy Ramos

**COMMITTEE CHAIRPERSONS**

AWARDS..... John Moczygemba  
EDITORIAL..... Bob Edwards  
ENDOWMENTS..... Dick Luebke  
ISSUES..... Nick Parker  
MEMBERSHIP..... Ronnie Pitman  
NOMINATING..... Bobby Whiteside  
POND MANAGEMENT..... Malcolm Johnson  
PUBLICITY/EXHIBITS..... Mark Staceff/Richard Ott

**AD-HOC COMMITTEES**

EXOTIC SPECIES..... Mike Reed  
FISHERIES WORKERS DIRECTORY..... Lance Robinson  
PROCEDURES MANUAL..... Joan Holt  
URBAN FISHING..... Ray Whitney  
STUDENT OUTREACH..... Beverly Villarreal  
STOCKS-AT-RISK..... Gary Garrett

**NEWSLETTER EDITOR**

Steve Magnelia  
P.O. Box 947  
San Marcos, Texas 78667-0947  
512-353-0072

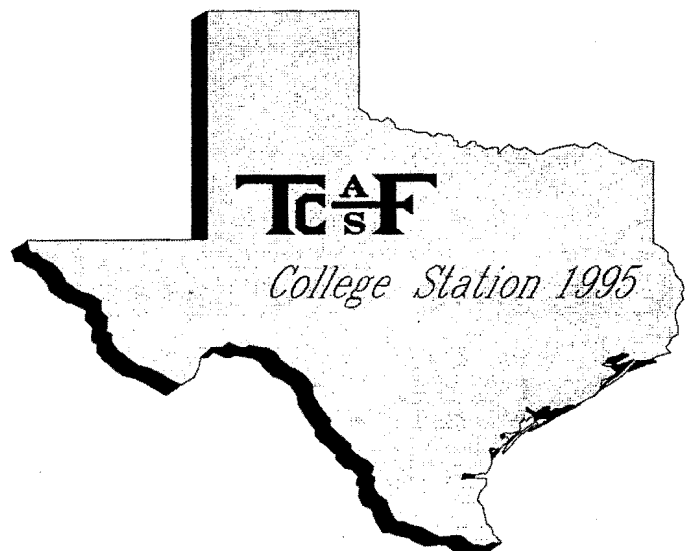
Newsletter submission deadlines:

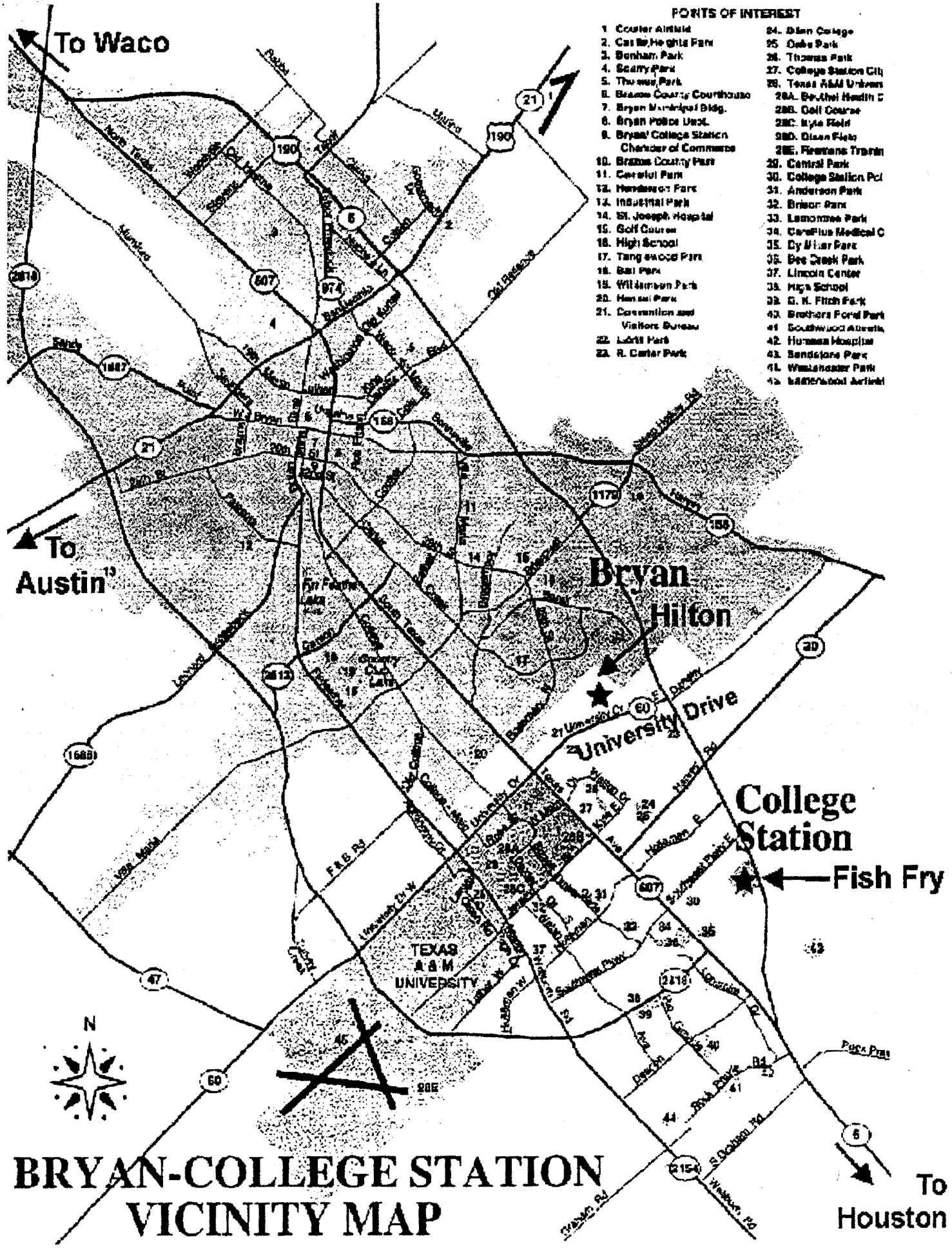
May 15, 1995.....June Issue

July 15, 1995.....August Issue

August 1, 1995.....Special Meeting Issue

Submissions are encouraged. Both a hardcopy and a MS-DOS compatible diskette should be submitted. Disks will be returned.





**POINTS OF INTEREST**

- |   |                          |
|---|--------------------------|
| 1. Custer Airfield                              | 84. Dean College         |
| 2. Cas @ Heights Park                           | 85. Oaks Park            |
| 3. Bonham Park                                  | 86. Thomas Park          |
| 4. Scary Park                                   | 27. College Station City |
| 5. Thomas Park                                  | 88. Texas A&M Unives     |
| 6. Brazos County Courthouse                     | 28A. Dr. Albi Health C   |
| 7. Bryan Municipal Bldg.                        | 28B. Golf Course         |
| 8. Bryan Police Dept.                           | 28C. Kyle Field          |
| 9. Bryan College Station<br>Chamber of Commerce | 28D. Olsen Field         |
| 10. Brazos County Park                          | 28E. Firestone Train     |
| 11. Ceresola Park                               | 29. Central Park         |
| 12. Harwood Park                                | 30. College Station Pol  |
| 13. Industrial Park                             | 31. Anderson Park        |
| 14. St. Joseph Hospital                         | 32. Briar Park           |
| 15. Golf Course                                 | 33. Lamorne Park         |
| 16. High School                                 | 34. CarePlus Medical C   |
| 17. Tangwood Park                               | 35. Cy Miller Park       |
| 18. Ball Park                                   | 36. Bee Creek Park       |
| 19. Williamson Park                             | 37. Lincoln Center       |
| 20. Hansen Park                                 | 38. High School          |
| 21. Convention and<br>Visitors Bureau           | 39. G. N. Fitch Park     |
| 22. Lott Park                                   | 40. Brothers Ford Park   |
| 23. R. Carter Park                              | 41. Southwood Athletic   |
|   | 42. Hummer Hospital      |
|   | 43. Sandstone Park       |
|   | 44. Wainwright Park      |
|   | 45. Hillwood Airfield    |

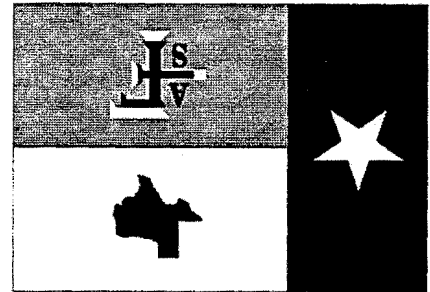
**BRYAN-COLLEGE STATION  
VICINITY MAP**

To  
Houston

**THE AMERICAN FISHERIES SOCIETY**

**THE TEXAS CHAPTER OF**

**THE NEWSLETTER OF**



NEWSLETTER EDITOR  
P.O. BOX 947  
SAN MARCOS, TEXAS 78667

NON-PROFIT ORG.  
U.S. POSTAGE PAID  
SAN MARCOS, TEXAS  
PERMIT NO. 323

006437 DA 9512  
Roger L. Mc Cabe  
1601 E Crest  
Waco, TX 76705